

# Smart Home automation as part of the Smart Grid

WFES 2010  
January 21, 2010

Dusan Janjic  
Buildings Solutions Sr. Manager,  
Schneider Electric Buildings Business, Dubai



# Agenda

- Schneider Electric at a glance
- Smart Grid Concepts
- Smart Home Automation
- Conclusion

# Schneider Electric at a glance

## 18.3

Billion global sales in 2008 (in€)

32% of sales in new economies  
x2 compared to 2004

## 110 000+

people in 100+ countries

## 5%

Sales devoted to R&D

## 170

Years of history through  
innovation and leading brands

The global specialist in  
Energy management

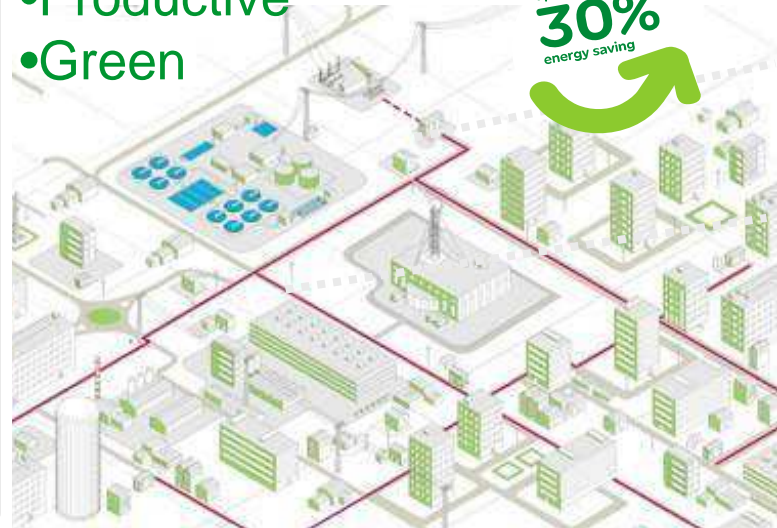
### Making energy:

- Safe
- Reliable
- Efficient
- Productive
- Green

Covering  
**72%**  
World Energy  
consumption

up to  
**30%**  
energy saving

Energy production  
& transmission

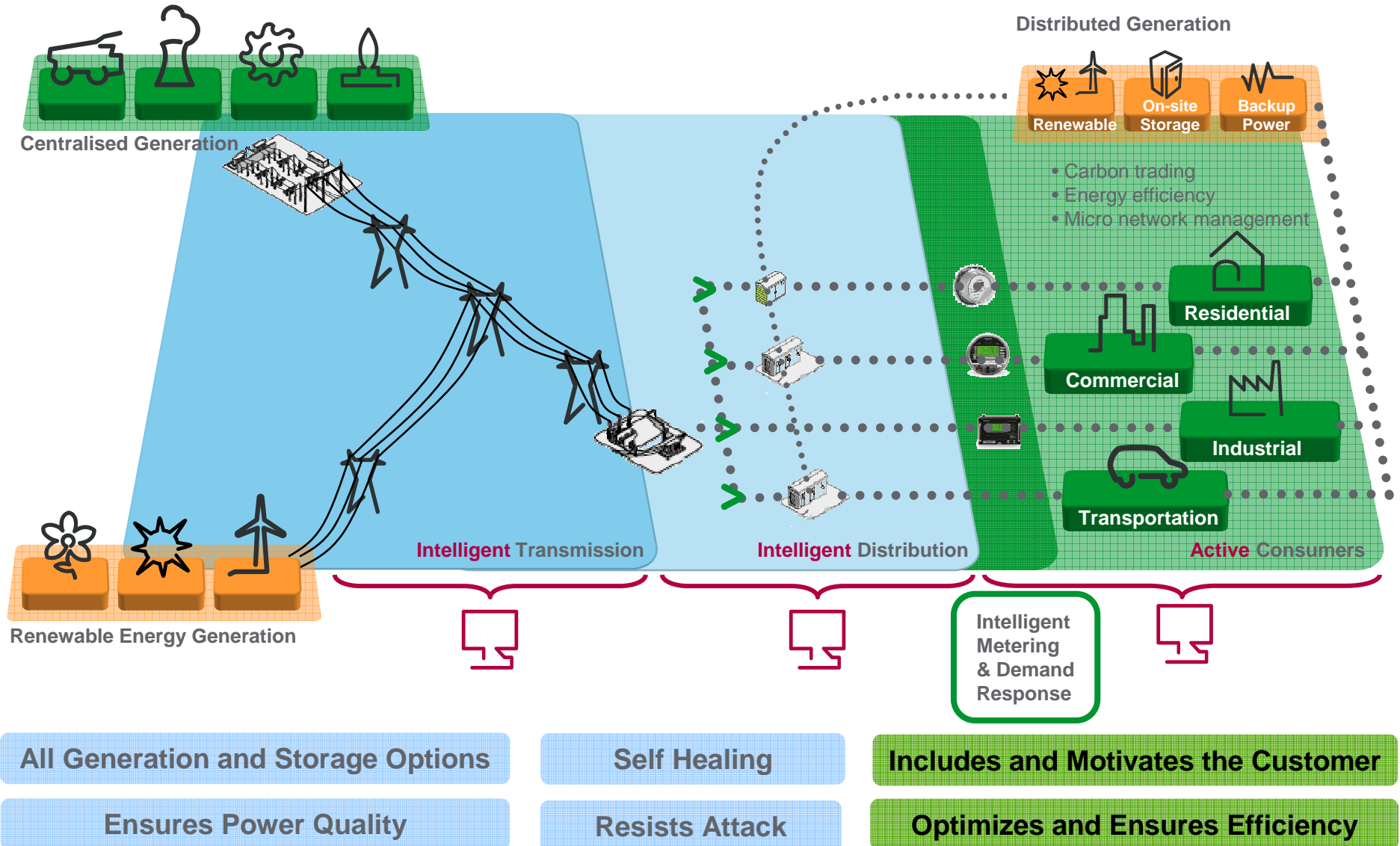


Energy usage

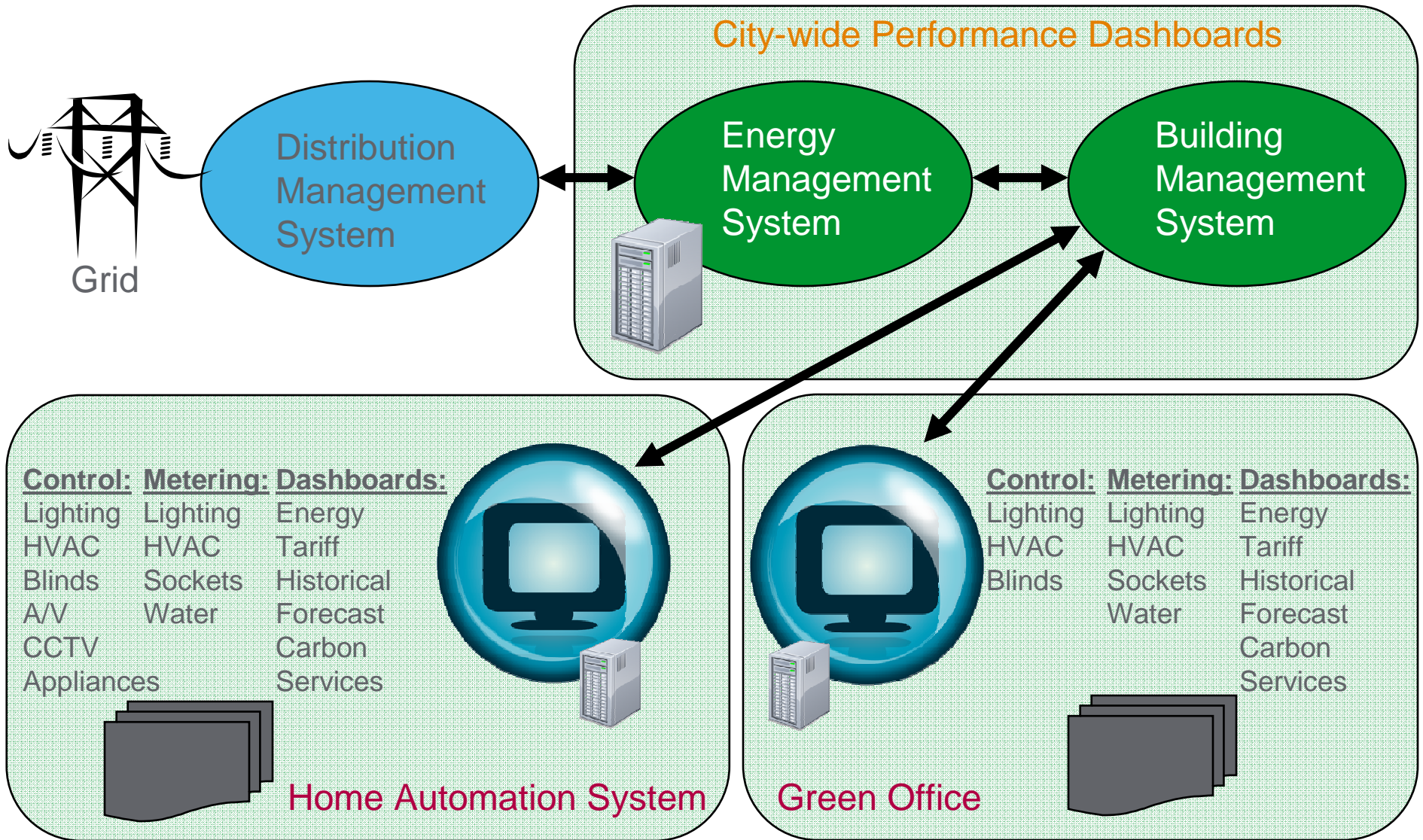
A Recognised  
Sustainable commitment






# Smart Grid is accelerating the energy value change transformation



# Smart Grid Architecture



# What do we want from Smart Homes?

- Comfort & Entertainment 
- Safety 
- Efficiency 
- Connectivity 



# Efficiency

With Schneider Electric,  
you can achieve more while using less  
at home...

# Automation makes energy saving happen

- Enjoy scene control while optimizing energy consumption
  - Lighting control is not about reducing light. It offers the correct light when and where required, while reducing wastage.
  - Enjoy optimal scenes by recalling the optimized pre-sets every time for sustainable energy-saving.



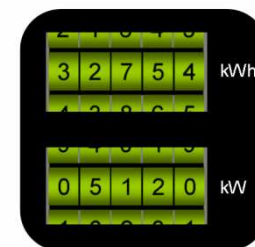
# Automation makes energy saving happen

- Save energy according to occupancy, light level, time of day, temperature, and demand levels
  - Blinds and shutters open and close automatically, based on time of day and amount of light to optimize the mix of natural light and artificial light ; or according to the temperature difference between indoor and outdoor to optimize HVAC power consumption.
  - Minimize wastage of energy without affecting usage with occupancy detection
  - Plan appliance control and vary settings depending on demand response levels



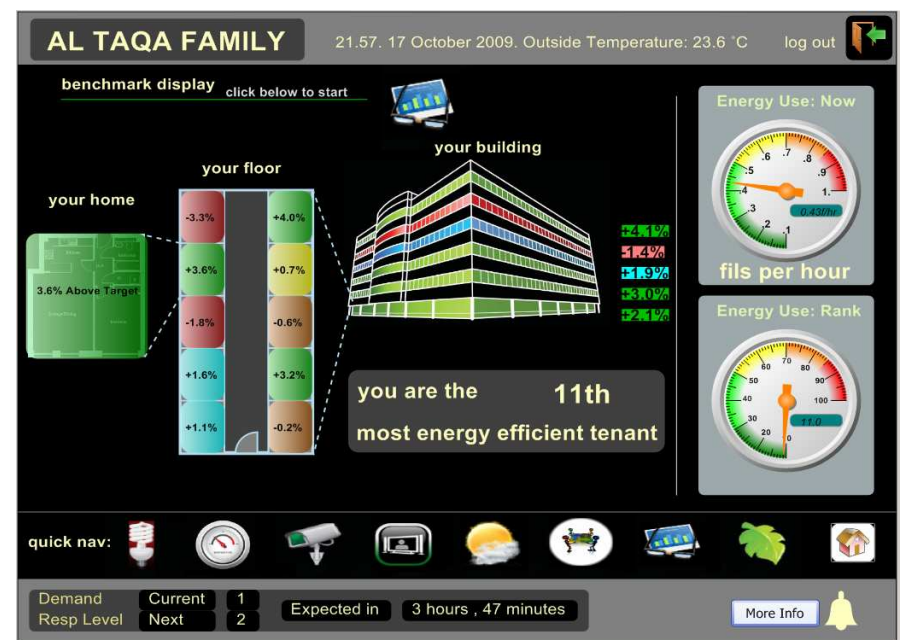
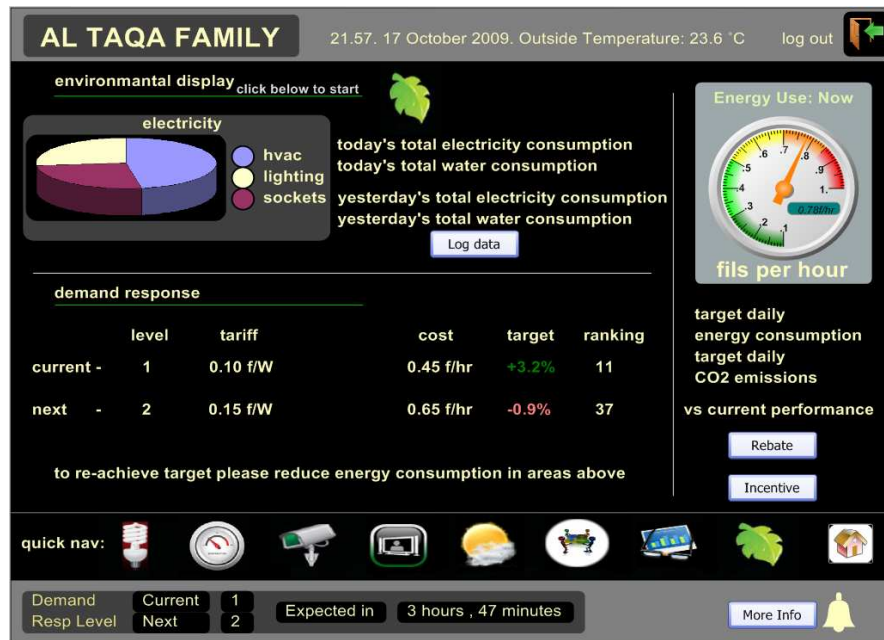
# Automation makes energy saving happen

- Time scheduling and predictive scheduling ensures peace of mind while providing energy savings
  - Lights and TV turned on will help to discourage potential intruders while you are away from home. Now with pre-set scheduling, you don't need to turn them on all the time and thus save energy.
  - Appliances and system settings can be automated to respond to demand response levels.
- Energy Monitoring
  - Monitor energy consumption alerts you about energy use and conservation.



# Helps to encourage change of behaviour

- Setup advance personal energy consumption plans
  - Take advantage of rebates/incentives
  - Plan and adapt to change
- Benchmark yourself on a community level



**The limitless possibilities  
that open up when you are  
fully connected**



# The limitless possibilities that open up when you are fully connected

- Use your mobile as a window to your house
  - Control all your devices from your mobile
  - Receive an email when the system detects an unexpected event
  - Combine remote video monitoring with your security system
- Stay in touch with the external world
  - Receive and display messages
  - Display news or the weather forecast on your wall mounted touch screen,
  - Etc...



# Visit us



Hall 4, booth 4405  
(next to the BP Carbon Theater)

**Tour the booth and be entered into our daily lottery**

The lucky winner to receive a brand new  
**Amazon Kindle** e-reading device right away!

**Schneider**  
Electric